



SUBMITTAL DATA SHEET

Job Name:		Contractor:	
Location:		Distributor:	
Engineer:		Date:	
Submitted To:		Model No:	MaxAir50eP3
Schedule ID:		No. of Outlets:	

Max Air Specifications	MaxAir50eP3
BTUH Heating @ 180°F E.W.T.	55,649
BTUH Heating @ 170°F E.W.T.	49,971
BTUH Heating @ 160°F E.W.T.	44,700
BTUH Heating @ 150°F E.W.T.	39,086
BTUH Heating @ 140°F E.W.T.	35,195
BTUH Heating @ 130°F E.W.T.	30,250
DX Cooling (tons) ⁽¹⁾	1.5(**) - 2.0
Power	120/1/60
C.F.M. @ 1.5" E.S.P.	580(**)
HP - RPM (fan)	1/2 HP – 1800 RPM (ECM – DC voltage)
Amps @ 120/1/60	6.8 FLA
G.P.M. Flow Rating	5
Copper Connection Size Ø	1/2"
Supply Air Connection - top	QTY (2) x 6", Qty (1) x 8"
Minimum Outlets (per supply)	6
Maximum Outlets (per supply)	7 ⁽³⁾
Return Air Size Required	12" x 14" min.
Physical Dimensions (L/W/H)	36"x14"x18-1/2"

⁽¹⁾ Smaller condensers may be matched to fan coil when required (match TXV to condenser size)

⁽²⁾ Dual supply outlet

⁽³⁾ Consult factory when designing with increased outlet counts

(**) consult factory for 1 ton application regarding reduce capacity and outlet requirement

Features

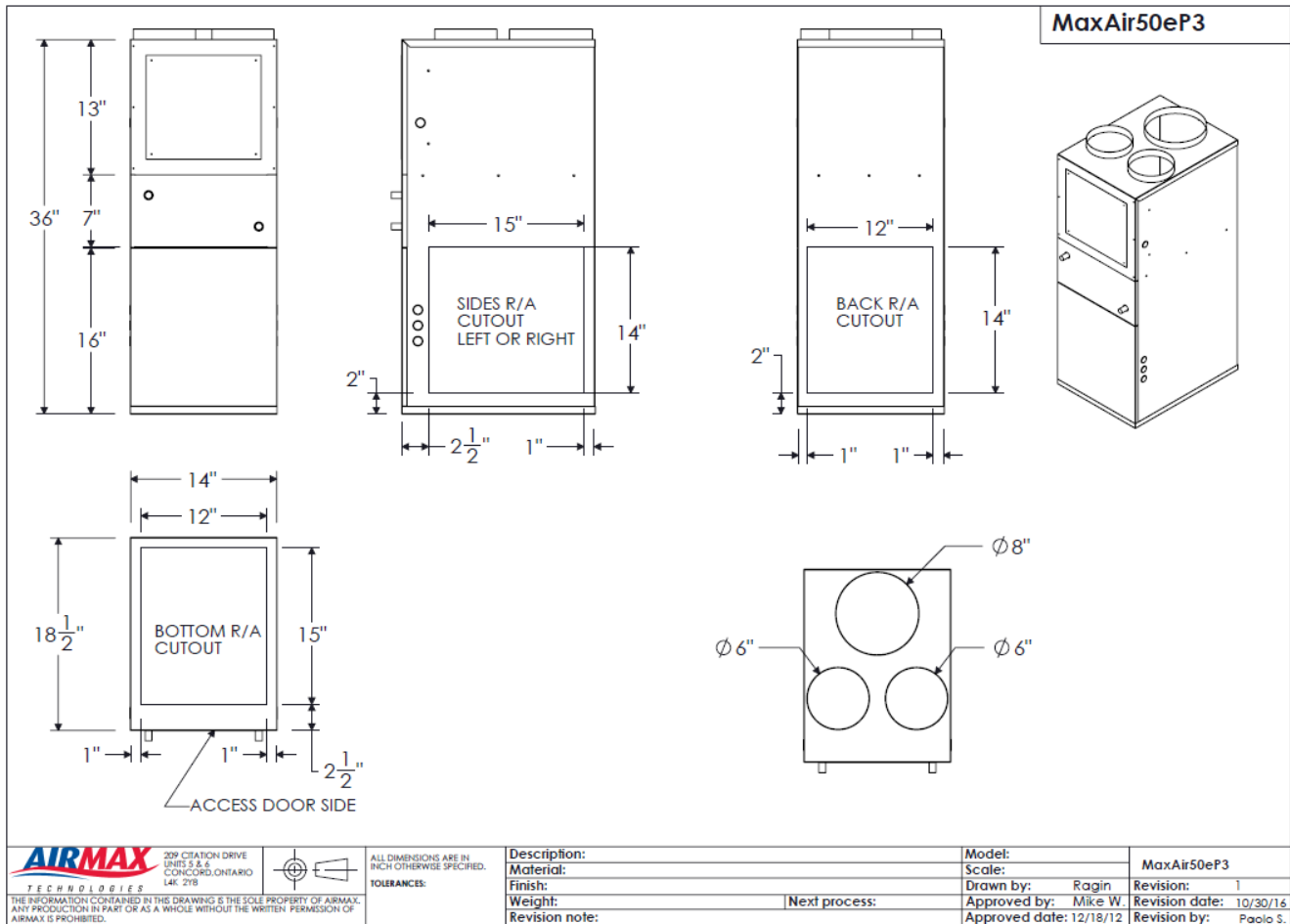
Prioritizing Comfort Levels / 3 Zone Capability / Plenum Sensor Equipped / Temperature Display
/ HI/Low Limit Cutout Adjustment / 2-Stage Heating/Cooling / Multiple CFM Options / Multi-
Positional Placement / Easily Installed / Easily Serviced / Multiple Return Options / Compact Size
/ Extensive Warranty

AIRMAX

T E C H N O L O G I E S

Accessories

Qty.	Part #	Description
	MA24-50-R410-A	24,000 BTU Horizontal DX Coil w/ self-adjusting TXV and freeze stat
	121-001	Diffuser c/w Damper
	125-001	Rough-In Kit (includes elbow, dust cap + take-off)
	107-001	Floor Extension riser (1.75")
	123-001	10ft, 2.5" flex duct assembly with connector
	124-001	5ft, 2.5" flex duct assembly with connector
	140-004	Circulating pump (c/w check valve) 1/2" sweat - field installed



Warranty

1 Year Parts and Labor, plus additional 12 months parts only, where applicable.

NOTES: _____

SBML-MaxAir50eP3

209 Citation Dr, Unit 5+6 Concord Ontario, L4K 2Y8. Tel: 905-264-1414, Fax: 905-264-1147